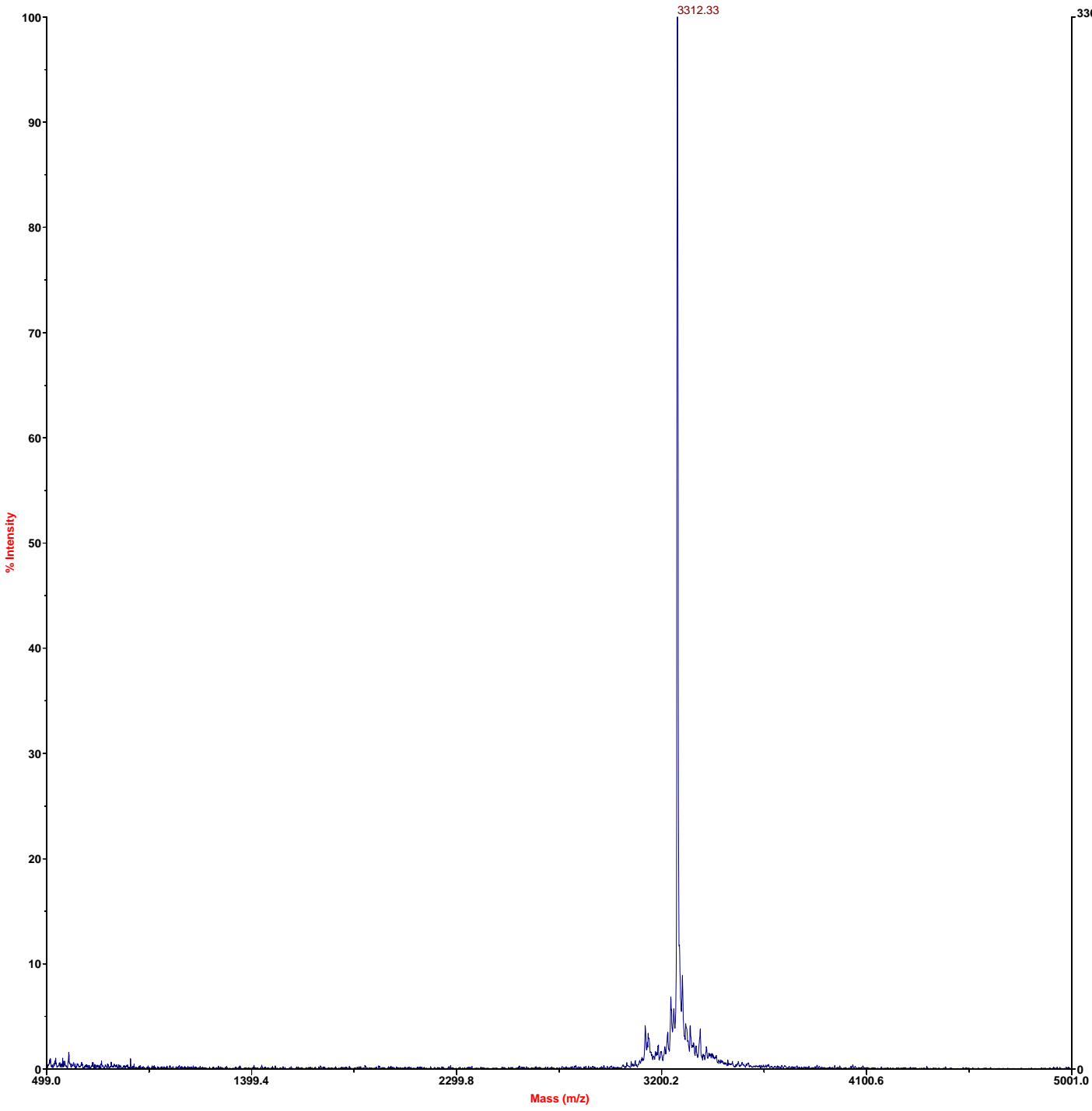


# Global Peptide Services



Mode of operation: Linear  
Extraction mode: Delayed  
Polarity: Negative  
Acquisition control: Manual

Accelerating voltage: 20000 V  
Grid voltage: 90%  
Guide wire 0: 0.05%  
Extraction delay time: 100 nsec

Acquisition mass range: 500 -- 5000 Da  
Number of laser shots: 200/spectrum  
Laser intensity: 749  
Laser Rep Rate: 20.0 Hz  
Calibration type: External -- C:\VOYAGER\Data\0724\_00\_0007.  
Calibration matrix: a-Cyano-4-hydroxycinnamic acid  
Low mass gate: 500 Da

Digitizer start time: 14.282  
Bin size: 2 nsec  
Number of data points: 15317  
Vertical scale: 100 mV  
Vertical offset: 0%  
Input bandwidth: 150 MHz

Sample well: 69  
Plate ID: 100 WELL  
Serial number: 1215  
Instrument name: Voyager-DE  
Plate type filename: C:\VOYAGER\100 well plate.plt  
Lab name: PE Biosystems

Absolute x-position: 42655.4  
Absolute y-position: 17047.3  
Relative x-position: 427.87  
Relative y-position: 219.805  
Shots in spectrum: 156  
Source pressure: 4.219e-007  
Mirror pressure: 0  
TC2 pressure: 0.04961  
TIS gate width: 30  
TIS flight length: 940