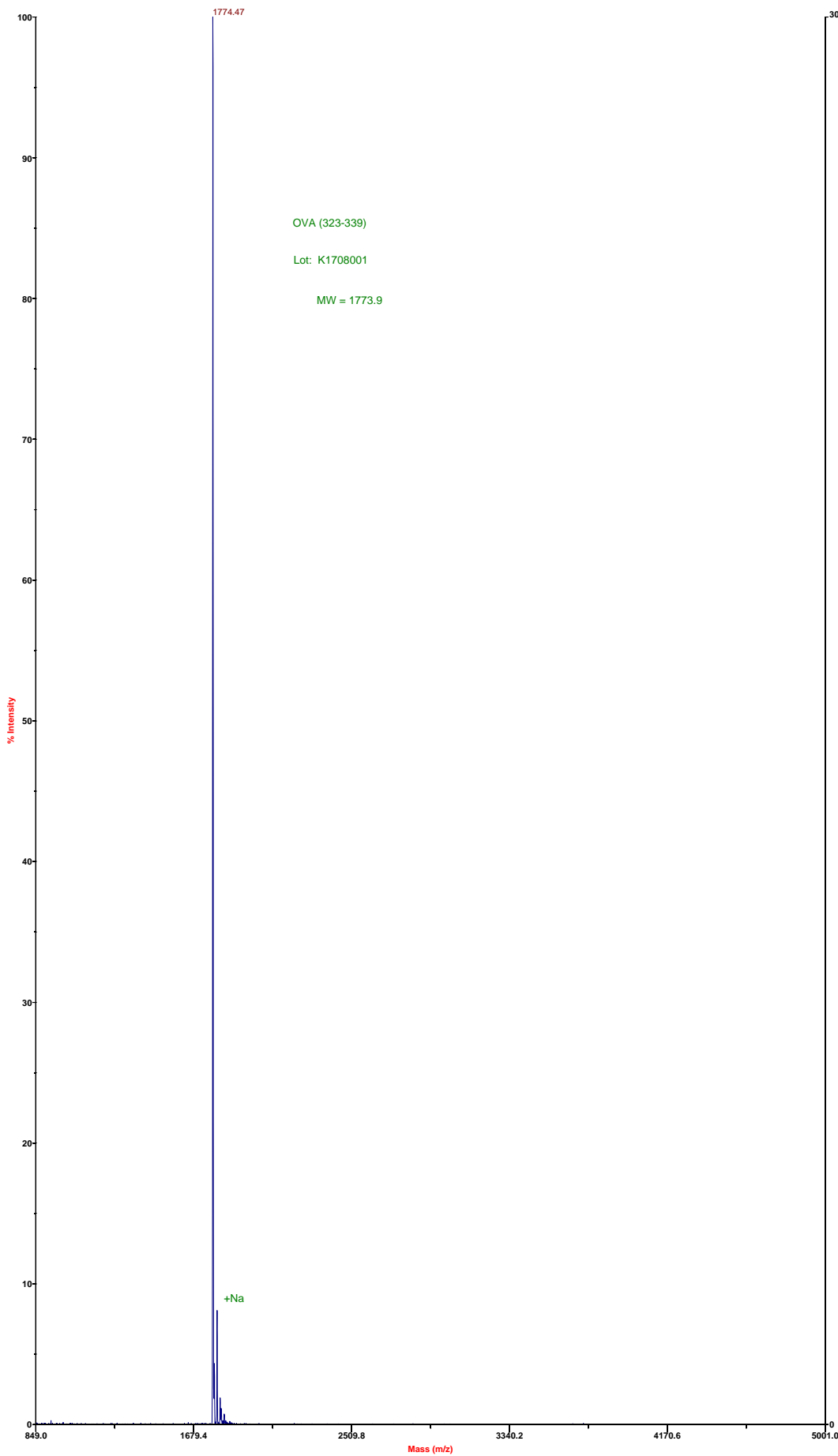


# Global Peptide Services



Mode of operation: Linear  
Extraction mode: Delayed  
Polarity: Negative  
Acquisition control: Manual

Accelerating voltage: 20000 V  
Grid voltage: 94%  
Guide wire 0: 0.05%  
Extraction delay time: 100 nsec

Acquisition mass range: 800 -- 5000 Da  
Number of laser shots: 300/spectrum  
Laser intensity: 980  
Laser Rep Rate: 20.0 Hz  
Calibration type: Default  
Calibration matrix: a-Cyano-4-hydroxycinnamic acid  
Low mass gate: 650 Da

Digitizer start time: 18.008  
Bin size: 2 nsec  
Number of data points: 13416  
Vertical scale: 200 mV  
Vertical offset: -5%  
Input bandwidth: 150 MHz

Sample well: 03  
Plate ID: 100 WELL  
Serial number: 1215  
Instrument name: Voyager-DE  
Plate type filename: C:\VOYAGER\100 well plate.pt  
Lab name: PE Biosystems

Absolute x-position: 9595.21  
Absolute y-position: 45205.8  
Relative x-position: -2152.29  
Relative y-position: -2101.7  
Shots in spectrum: 136  
Source pressure: 4.009e-007  
Mirror pressure: 0  
TC2 pressure: 0.001  
TIS gate width: 30  
TIS flight length: 940