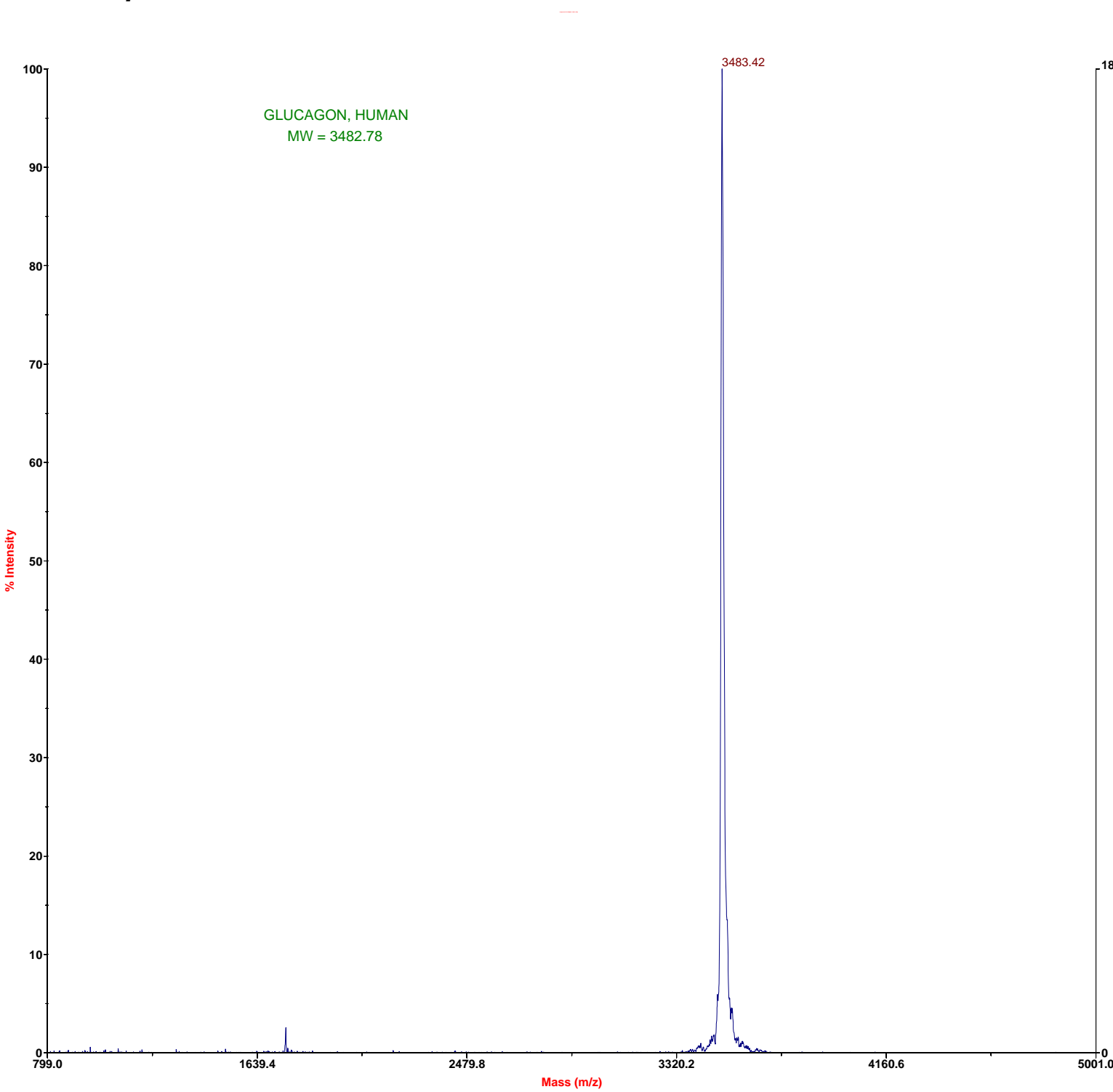


Global Peptide Services



Mode of operation: Linear
Extraction mode: Delayed
Polarity: Positive
Acquisition control: Manual

Accelerating voltage: 20000 V
Grid voltage: 94%
Guide wire 0: 0.05%
Extraction delay time: 100 nsec

Acquisition mass range: 800 -- 5000 Da
Number of laser shots: 300/spectrum
Laser intensity: 1003
Laser Rep Rate: 20.0 Hz
Calibration type: Default
Calibration matrix: a-Cyano-4-hydroxycinnamic acid
Low mass gate: 750 Da

Digitizer start time: 18.008
Bin size: 2 nsec
Number of data points: 13414
Vertical scale: 200 mV
Vertical offset: -2.5%
Input bandwidth: 150 MHz

Sample well: 32
Plate ID: 100 WELL
Serial number: 1215
Instrument name: Voyager-DE
Plate type filename: C:\VOYAGER\100 well plate.pt
Lab name: PE Biosystems

Absolute x-position: 8029.82
Absolute y-position: 32825.7
Relative x-position: 1362.32
Relative y-position: 758.17
Shots in spectrum: 94
Source pressure: 4.02e-007
Mirror pressure: 0
TC2 pressure: 0.001
TIS gate width: 30
TIS flight length: 940