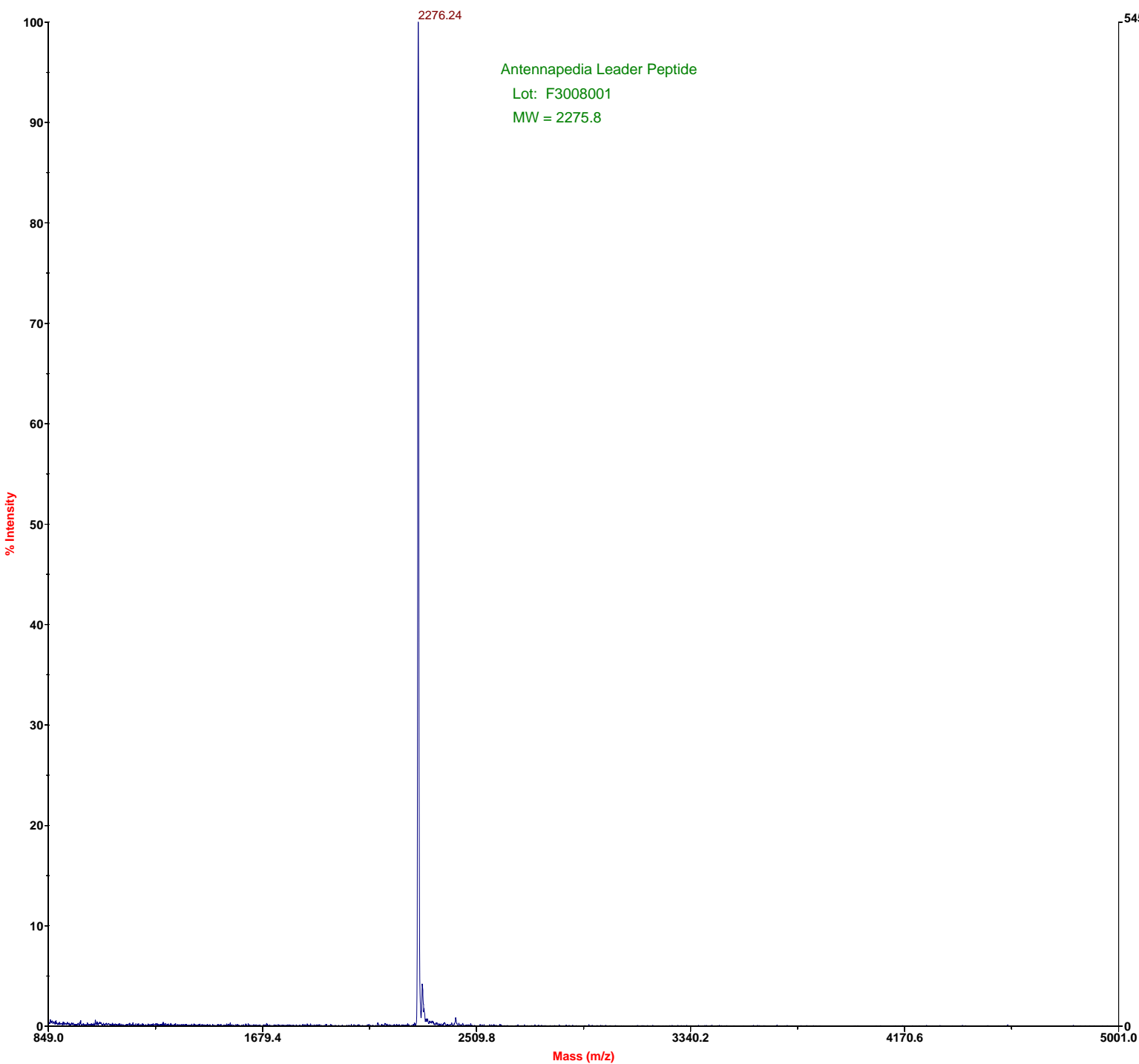


Global Peptide Services



Mode of operation: Linear
Extraction mode: Delayed
Polarity: Negative
Acquisition control: Manual

Accelerating voltage: 20000 V
Grid voltage: 94%
Guide wire 0: 0.05%
Extraction delay time: 100 nsec

Acquisition mass range: 850 -- 5000 Da
Number of laser shots: 300/spectrum
Laser intensity: 1380
Laser Rep Rate: 20.0 Hz
Calibration type: Default
Calibration matrix: a-Cyano-4-hydroxycinnamic acid
Low mass gate: 800 Da

Digitizer start time: 18.56
Bin size: 2 nsec
Number of data points: 13140
Vertical scale: 200 mV
Vertical offset: -2.5%
Input bandwidth: 150 MHz

Sample well: 54
Plate ID: 100 WELL
Serial number: 1215
Instrument name: Voyager-DE
Plate type filename: C:\VOYAGER\100 well plate.pt
Lab name: PE Biosystems

Absolute x-position: 16247.4
Absolute y-position: 22518.8
Relative x-position: -580.088
Relative y-position: 611.315
Shots in spectrum: 135
Source pressure: 2.078e-007
Mirror pressure: 0
TC2 pressure: 0.01311
TIS gate width: 30
TIS flight length: 940